

Connector Specification

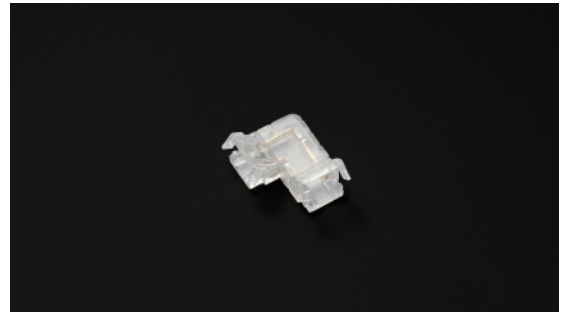
# CBBL210-DFTA

Board-to-board | 2PIN | 10mm Board width | NO Protection

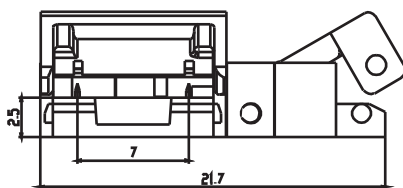
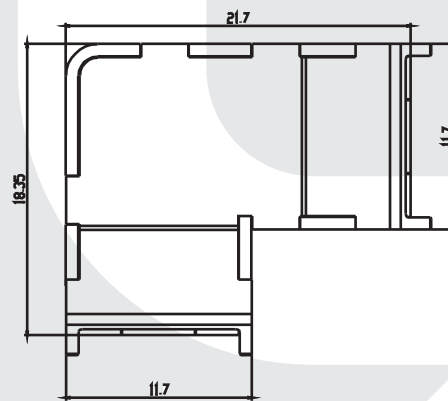
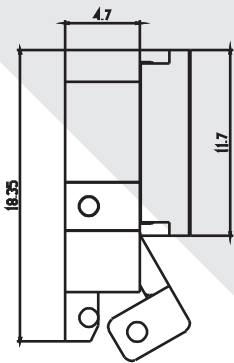


## 【Features】

- Name:L-type board-to-board connector
- PIN:2PIN
- Process:NO
- IP process:IP20
- Applicable board width:10 mm
- Rated current:AWG 20 / 4A Max
- Rated voltage:5V / 9V / 12V / 18V / 24V / 36V / 48V ;
- Temperature tolerance:80 °C;
- Working temperature:- 10 °C ~ + 80 °C;
- Acceptable humidity:15% ~ 70%;
- 2-year warranty;



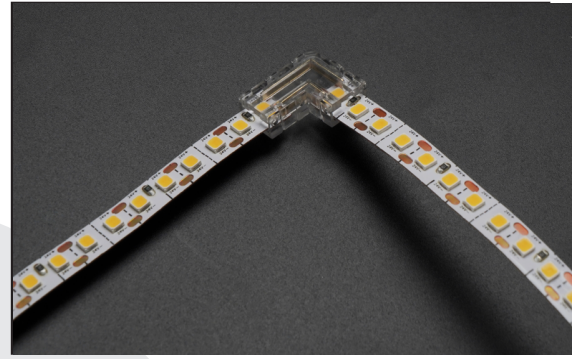
## 【Mechanical Parameter】



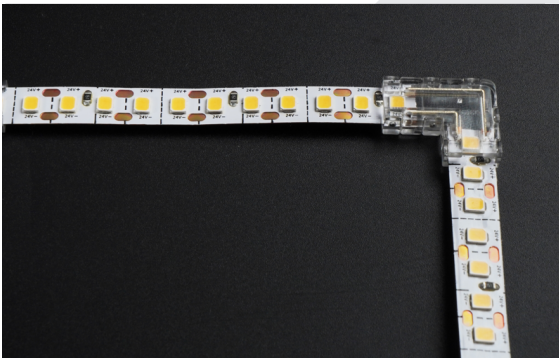
## [Installation]



1.Insert the first LED strip along the longer side of connector and press it to the bottom of the movable buckle.



2.Insert the second LED strip along the shorter side of connector. Note that its positive and negative poles is corresponding to the first LED strip. Then press it to the bottom of the movable buckle

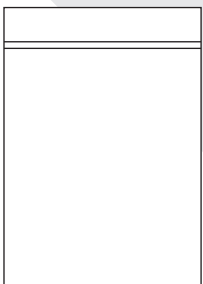


3.installation is complete.

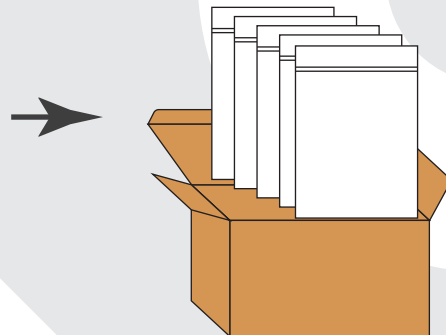
## [Product package]

### • Standard package information (10pcs/bag)

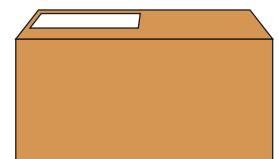
1. 10pcs connectors packed into PE bag



2. 5 PE bags packed into box



3. Stick information label onto the box



Product code	Net weight per piece	Weight of per bag	Weight of per box	Weight of per carton
CBBL210-NOTA	1.26g	14.05g	91.5g	5.32kg

Note: weight error is within 10%

## **【Precaution】**

- Please use this product in dry environment.
- Before installation, pay attention to negative and positive poles of LED strip to avoid short circuit or product damage
- Use professional tools as per requirements to press down metal head of connector to avoid hurt or fingers or product damage.
- It is strictly prohibited to use any acidic or alkaline adhesive to fix the product(include but not limited to glass glue).

